

PLASTTRÅG M.M.

Small World

Play Trays



1. Square Tray

HC333001

169 kr

Size: 550 x 550mm

2. Square Mirror Mat

HC332936

270 kr

Ideal to accompany the square tray, this mirror mat is made from acrylic. Excellent tool for demonstrating symmetry and exploring self reflection. Size: 550 x 550mm.

3. Rectangular Tray

HC254910

169 kr

Size: W355 x D745mm.

4. Rectangular Mirror Mat

HC254962

270 kr

Ideal to accompany the rectangular tray, this mirror mat is made from acrylic. Excellent tool for demonstrating symmetry and exploring self reflection. Size: 355 x 745mm.

5. Pouring Tray

HC1000532

175 kr

Suitable for indoor or outdoor use. Size: W400 x L530mm, depth 95mm.

6. Large Square Tray

HC88202207

295 kr

A sturdy, durable tray made from tough plastic which is a great addition for mini play and exploring natural resources. Ideal for many activities including sand and water play. Fits within the Creation Station Wooden Stand. Size: 1m², Depth 120mm, 100 litre capacity.

7. Creation Station Indoor/Outdoor Stand

HC1000535

1328 kr

Ideal for indoor or outdoor use, and suitable for wet play, this lightweight metal base is easy to move, and partially folds for storage. For use with the 1m² trays. Direct Delivery – up to 6 weeks

SPECIAL OFFER

SAVE

Buy 3 Large Trays
Together and save
2975 kr

HC1000565

Global delivery and a dedicated international team, based locally to you

There are **endless ways** to transform this **sturdy play tray** into exciting small worlds, especially when combined with our range of **mats** and **accessories**. Bring the **arctic** into your classroom, **explore oceans and mountains**, create a **prehistoric swamp** for **dinosaurs**, or even act out a much loved fairytale!


SPECIAL OFFER
SAVE

Buy 3 Trays together
for only
725 kr

HC1253490
Play Tray
HC1239842
295 kr

Ideal for sand and water, messy play, art and craft and various role play scenarios. Extremely versatile tray suitable for a variety of resource requirements. The sturdy plastic tray measures: W1000 x D1000 x H80mm.

Play Tray Stand
HC1239846
1263 kr

The sturdy metal stand is for use with the Play Tray. The stand has an adjustable height of 450, 550 or 650mm. Size: D970 x W970mm.


SPECIAL OFFER
SAVE

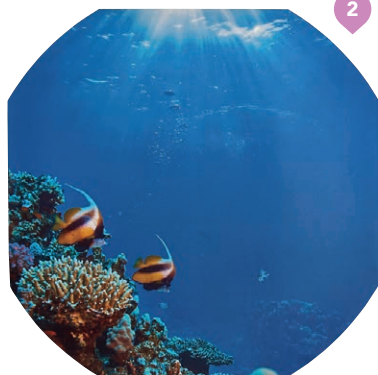
Buy the Play Tray and
Stand Together
2842 kr

HC1435472

Play mats specifically designed to fit inside our play trays. Use with or without the tray. **Ideal for role play and storyline.** With unique designs, they will **inspire children to play** and use their **imagination**. Choose from a range of designs including Farmyard, Fairytale, Dinosaurs, Minibeasts, Ocean Life and Mirror. Size: Diameter 880mm.



1. Farmyard Play Tray Mat
HC1302347 295 kr



2. Ocean Life Play Tray Mat
HC1302355

295 kr



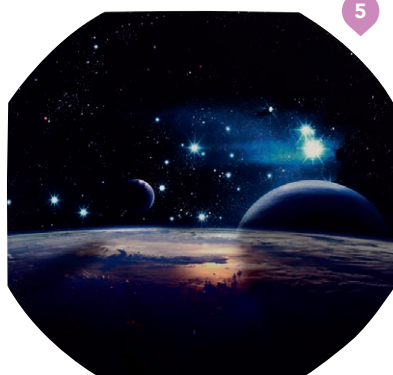
3. Dinosaur Play Tray Mat
HC1302351

295 kr



4. Fairytale Play Tray Mat
HC1302349

295 kr



5. Space Play Tray Mat
HC1488151

295 kr



6. Airport Play Tray Mat
HC1501804

295 kr



7. Antarctica Play Tray Mat
HC1499707

295 kr

1



1. Grass Style Sensory Play Tray Mat

HC1625890

£41.95

2

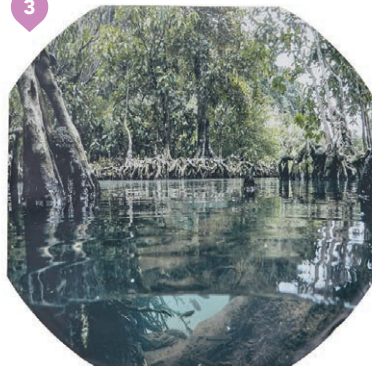


2. Minibeasts Play Tray Mat

HC1302353

295 kr

3



3. Water and Slime Proof Swamp Play Tray Mat

HC1625888

325 kr

This swamp play tray mat is wipeable so you can add slime and sand for a realistic and messy play session. Diameter 880mm.

4



4. Storytelling Mat – Landscape

HC1673720

295 kr

5



5. Superheroes By Day Play Tray Mat

HC1499709

295 kr

6



6. Superheroes By Night Play Tray Mat

HC1499711

295 kr

7



7. Superhero Hideout Island Play Tray Mat

HC1501802

295 kr



1. Storytelling Mat - Red Riding Hood & 3 Bears
HC1673714 295 kr



2. Storytelling Mat - Saharan Landscape
HC1673722 295 kr



3. Storytelling Mat - Through The Woods
HC1673718 295 kr



4. Alphabet Play Tray Mat
HC1665225 295 kr



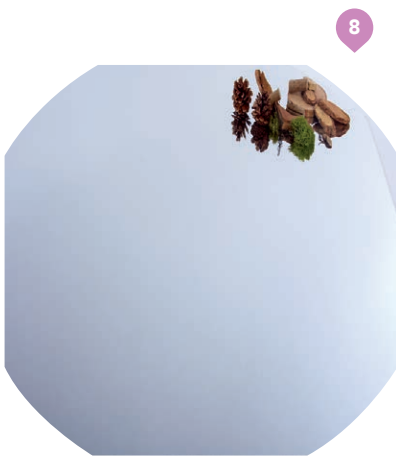
5. Early Number Play Tray Mat
HC1674180 325 kr



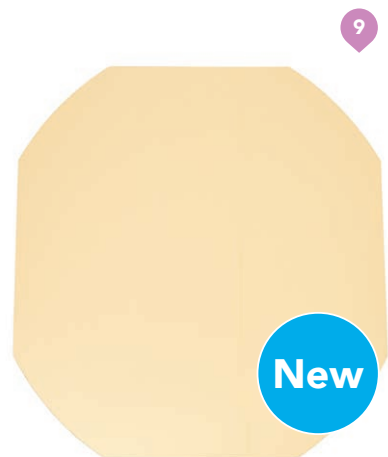
6. Chalkboard Play Tray Mat
HC1775129 295 kr



7. Straw and Hay Style Sensory Play Tray Mat
HC1625892 431 kr



8. Mirrored Play Tray Mat
HC1303457 578 kr



9. NEW Gold Mirrored Play Tray Mat
HC1822153 578 kr



1. NEW Large Grain Cork Play Mat

HC1816908

431 kr

This mat is made from flexible cork with a fabric backing so can be rolled to be stored. Can be used both in our play trays and individually. Perfect for creating a desert environment without the mess of sand. Diameter: 880mm.



2. NEW White Glitter Play Mat

HC1816904

486 kr

This glitter mat can be used both in our play trays and individually. Perfect for creating a snowy environment or an enchanted world for use with unicorns and fairies. Flexible material so can be rolled to be stored. Diameter: 880mm.



3. NEW Blue Glitter Play Mat

HC1816906

486 kr

This glitter mat can be used individually in small world play or in conjunction with a play tray. Perfect for creating a sea environment. Flexible material so can be rolled to be stored. Diameter: 880mm.



4. NEW Dry Wipe Play Tray Mat

HC1825773

578 kr

This great Dry Wipe play tray mat adds another dimension to your play tray. Allowing you to use a dry wipe pen on the mat to draw pictures, create landscapes or even use for Maths and English! A great extension to a brilliant resource! Can also be used out of our play trays. It can be used with dry wipe markers and wipes clean every time! 880mm diameter.

New

All products on
this page are new
for 2020

Guaranteed to provide hours of **creative play**, each of our great value play tray bundles includes everything you need to create **stimulating** and **imaginative** small world environments. From **sensory elements** such as rocks and sand, to animal footprints that **encourage sorting** and **matching skills**, these kits are designed to save you time and money.



1. Farm Play Tray Bundle

HC1811873

1438 kr

This farm set includes: Pine Felt Trees, Circular Wood Cuts, Farm Animals and their Babies, Let's Investigate Farm Footprints and Grass Style Sensory Play Tray Mat. Age Suitability: 3 Years +

2. Cold Environment Play Tray Bundle

HC1811871

1438 kr

This cold environment set includes: Mirrored Play Tray Mat, Instant Snow, Classmates Modelling Dough White, Small White Stones, Schleich Arctic and Antarctic Animal Set and Play Igloo. Age Suitability: 3 Years +

3. Dinosaur Play Tray Bundle

HC1811875

1975 kr

This dinosaur set includes: Schleich Dinosaur Set of 7, Play Cave, Kinetic Sand 1kg, Dinosaur Bones, Dinosaur Footprints, Straw/Hay Style Play Tray Mat and Assorted Coloured Pebbles 1kg. Age Suitability: 3 Years +

4. Construction Play Tray Bundle

HC1811778

1414 kr

This construction set includes: Classic Road Tape, Tower Crane, Front End Loader, Construction Workers, Small White Stones, Small Black Stones and Natural Kinetic Sand. Age Suitability: 3 Years +



1. NEW Outdoor Play Tray Stands

HC1834343 pack 3 3560 kr

These stands fit our play trays perfectly and come in three different heights: 270mm, 370mm and 570mm. The set can be used together for water channelling activities or separated for use in different aged nursery rooms. Made from Scandinavian Redwood. Suitable to be left outdoors - wood is guaranteed for 10 years against rot, decay and insect infestation. Some assembly required. Age Suitability: 3 Years +

2. Play Tray Cover

HC1489510 249 kr

A durable, lightweight, water repellent cover with strong elasticised edges, designed especially to fit snugly over our Play Tray. Colours may vary. 100% PU coated Nylon. Age Suitability: 3 Years +

3. Play Tray Feely Cover

HC1775131 285 kr

This blue cotton cover, with coloured hand holes has been designed for children to have a sensory experience, exploring objects through touch rather than sight. The elasticated cover fits over the top of our durable play trays, and allows you to create sensory experiences below, ranging from toys, to water or sand! A brilliant way to develop children's language skills through communication too. 100% PU coated Nylon with Polypropylene coloured webbing. Covers a play tray 1000 x 1000mm. Age Suitability: 3 Years +

4. NEW Reversible Play Tray Top

HC1822167 1263 kr

This fabulous play tray top fits on to our play trays and converts them into an extra space to play and learn! Even better this play tray top is reversible, chalkboard on one side and dry wipe on the other, making it twice as useful and twice as fun! With great rubber stoppers to stop the tray top moving in use. A brilliant addition to any nursery or school. Age Suitability: 18 Months +

